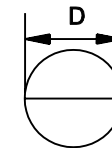
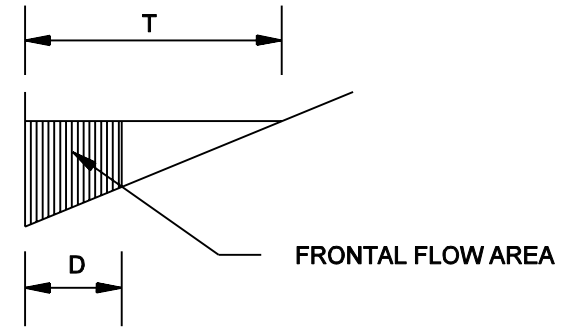
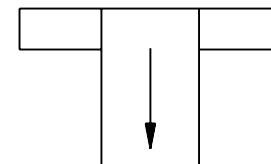


Key:

- Empiric curves based on laboratory data by Anderson, 1973
- - - 100% of frontal flow of width, D
- su Slope at next to last upstream inlet



NOTE: ONE CROSS BAR DID NOT SIGNIFICANTLY REDUCE EFFICIENCY FOR $D = 150$ mm.



EXAMPLE

GIVEN:

$D = 150$ mm; $T = 1.2$ m

$S_u = 2\%$

THEN:

$D/T = 0.125$

$E = 0.33$

EFFICIENCY CURVES FOR CIRCULAR DRAINS

Figure 33-5A